

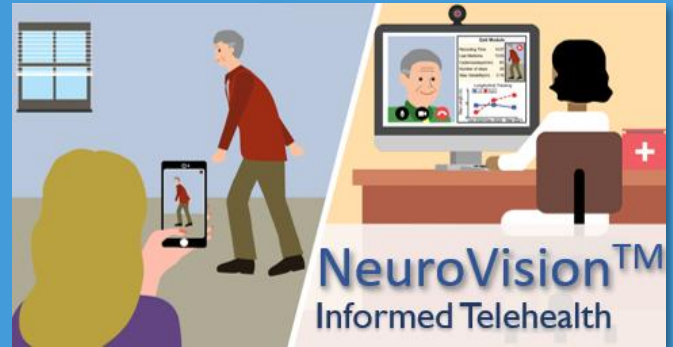


# ALTEC

Movement Sciences R&D

IRB Approved at the  
Study Level  
May 08, 2023

## SEEKING VOLUNTEERS FOR PARKINSON'S RESEARCH STUDY



Do you have Parkinson's symptoms (tremor, slow movement, unsteady gait)? You may be eligible for a **1-1.5 hr research study** to evaluate a new smartphone technology that can aide remote telehealth care.

### You May Qualify If You

- Are 45+ years of age
- Have Parkinson's disease

### Compensation

\$20/hr including travel time.

### Participation Involves

- Perform seated arm and leg movements; and gait
- Your movements will be recorded using a video camera.

### Location

Delsys/Altec Inc.  
23 Strathmore Rd  
Natick, MA 01760

*Free transportation available upon request.*

**Read more about us at**

[www.altecresearch.com](http://www.altecresearch.com)

## Contact Info

**Bhawna Shiwani**

**(508) 545-8217**

**[bshiwani@delsys.com](mailto:bshiwani@delsys.com)**

