

We Need Help with Parkinson's Research

Researchers at Boston University are seeking **adults with Parkinson's disease (aged 18 - 100 years)** to take part in a speech research study. The outcomes of the study will help researchers identify better treatments for voice and speech deficits in Parkinson's.

Are you eligible?

Participants should have

- a diagnosis of Parkinson's disease
- no history of moderate - severe hearing loss or regular use of a hearing aid

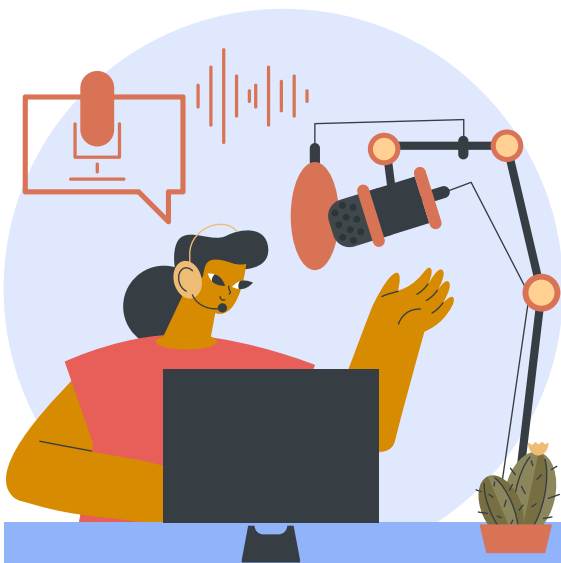
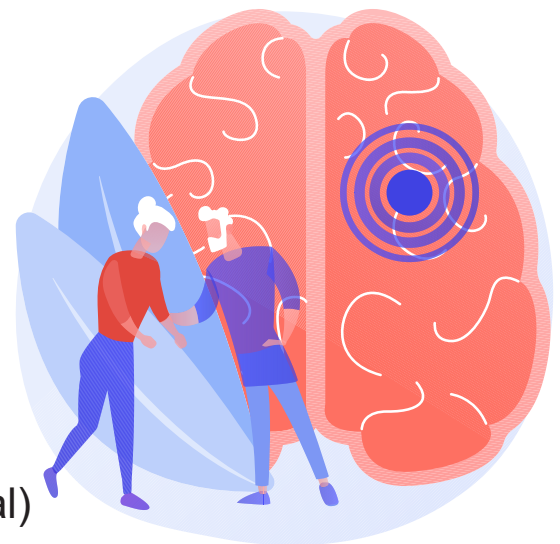
What's involved?

You may be asked to:

- produce speech
- listen to and rate speech samples
- fill motor and cognitive function scales
- complete self-rating scales
- carry out speaking tasks off medication (optional)

Participants will be asked to come in for 1 – 10 sessions, each up to 3 hours.

SCAN ME



Compensation \$30/hr

Contact Us at:

stepplab@gmail.com

617-358-1395

677 Beacon St. Boston, MA

 **STEPP LAB**
Sensorimotor Rehabilitation Engineering

NIH-funded laboratory studying voice control in Parkinson's