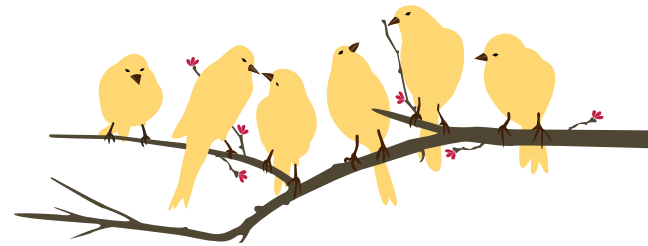


Are you caring for someone with Parkinson's disease?

Our Care Partner Support Group meets twice a month via Zoom. Based on the North Shore, this group offers the chance to:

- Join with others to share the challenges you face
- Learn about resources and strategies
- Be part of a supportive and caring community



When: Tuesdays, 11:00 a.m. – 12:30 p.m., alternating weeks
Jan 12, 26, Feb 9, 23, Mar 9, 23, Apr 6, 20, and May 11, 25

Where*: Online, via Zoom video conferencing.
A link will be provided upon registration.

Cost: Suggested contribution \$10 per session, \$100 for this series

Facilitator: Stephanie Recchia, LICSW, Geriatric Medical Social Worker

To RSVP or find out more information, please contact Anne Muskopf at amuskopf@jfcsboston.org or 781-693-5069.

"The group has been a lifeline. I feel less alone." —BK
"Sharing with others brings balance to my life." —LG



**Under normal circumstances, JF&CS offers in-person support groups on the North Shore and in Waltham. Our groups are currently virtual and open to all care partners, regardless of location.*