

Assistive Technology to Assist Persons with Parkinson's Disease

Bob Cunningham, PhD, OT/L, ATP
Maryville University

Objectives

- Review assistive technology options to assist with:
 - Computer access
 - Mobile phone and tablet access
 - Environmental Control
 - Communication

Assistive Technology

Any item, piece of equipment or product system whether acquired commercially off the shelf, modified, or customized that is used to increase or improve functional capabilities of individuals with disabilities.

PL 100-407 Technical Assistance to the States Act



Assistive Technology for Parkinson's Disease

- Cooking
- Eating
- Dressing
- Bathroom
- Computer Access
- Mobility
- Communication
- Organizing





Computer Use

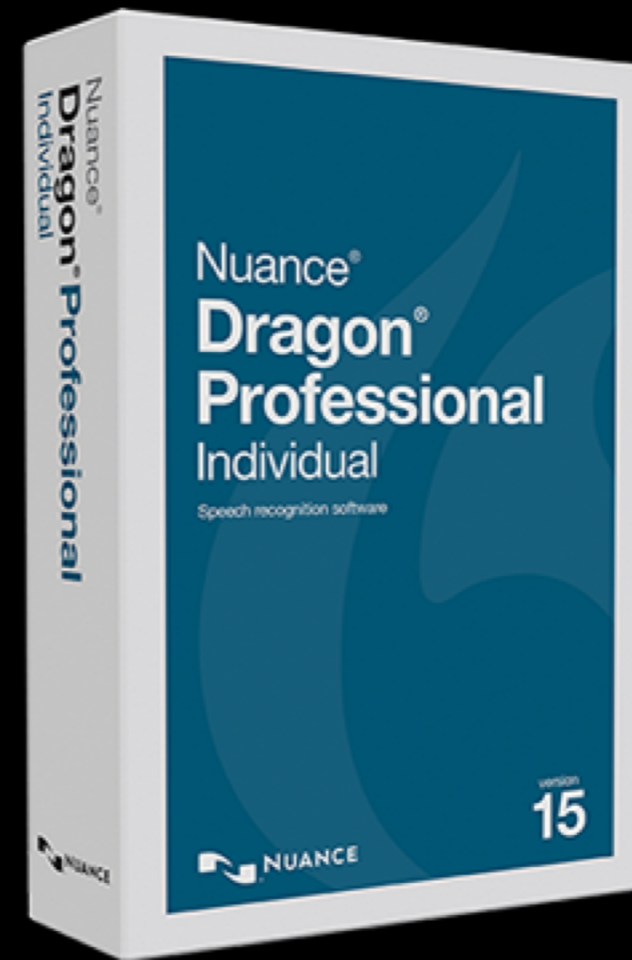
Keyboard Alternatives

- Large key keyboard
- Keyguard



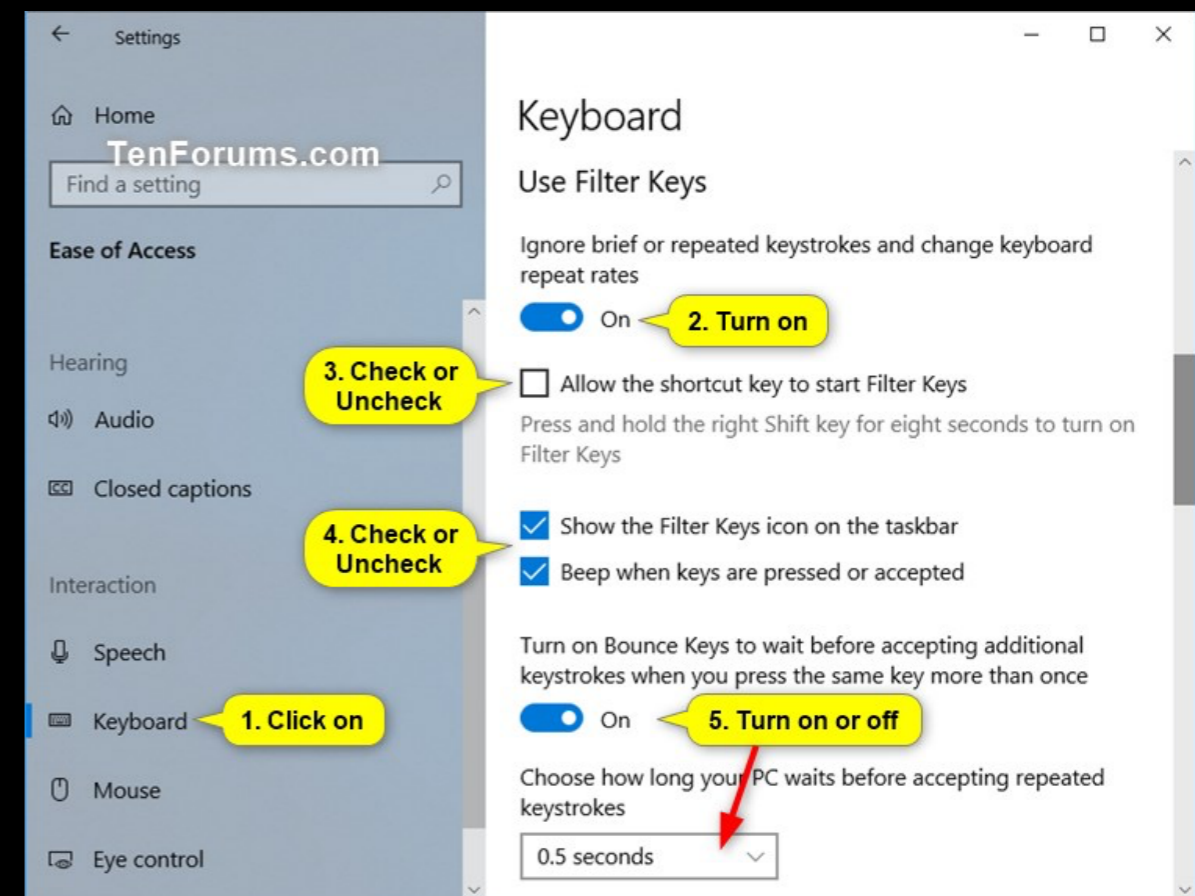
Keyboard Alternatives

- Speech Recognition



Keyboard Settings

- Slow Keys
 - Disregard keystrokes that are not held down for a specified period of time
- Repeat Keys
 - Turns off repeat feature



Mouse Alternatives

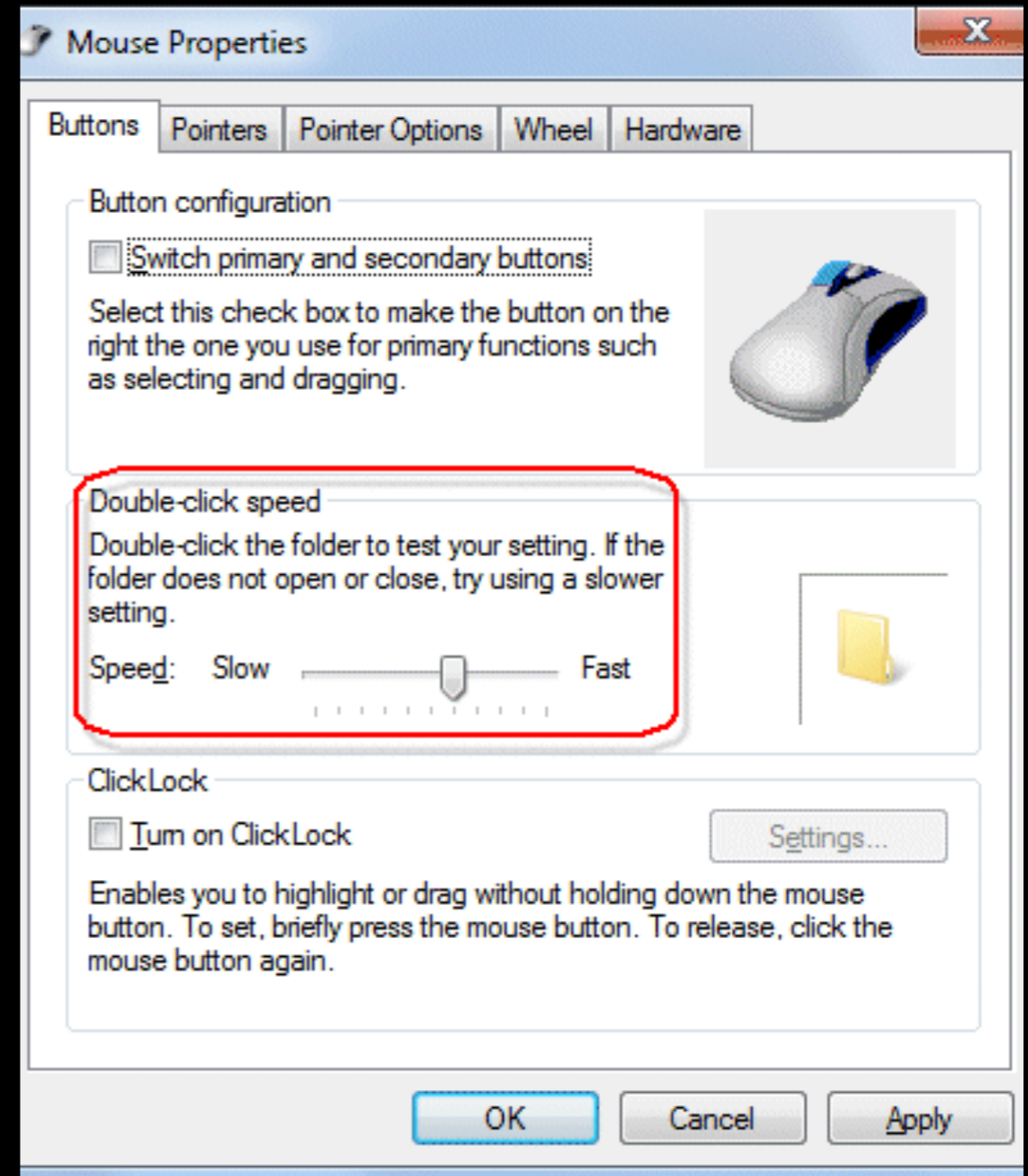
- Stationary Devices
- Head Control
- Eye Gaze
- Tremor Control





Mouse Settings

- Tracking / Cursor Speed
- Double Click Speed
- Mouse Keys



Mobile Devices

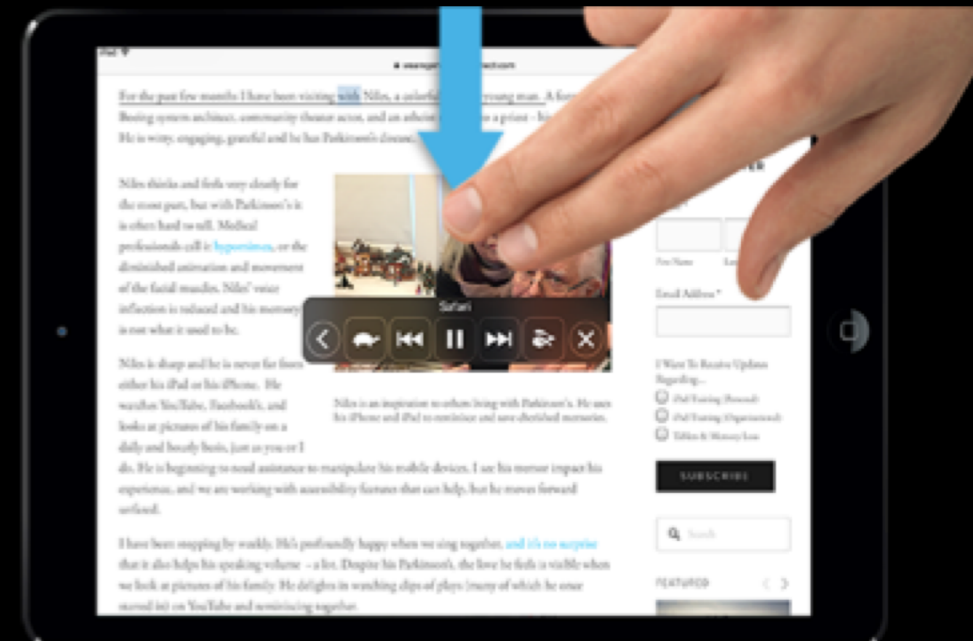
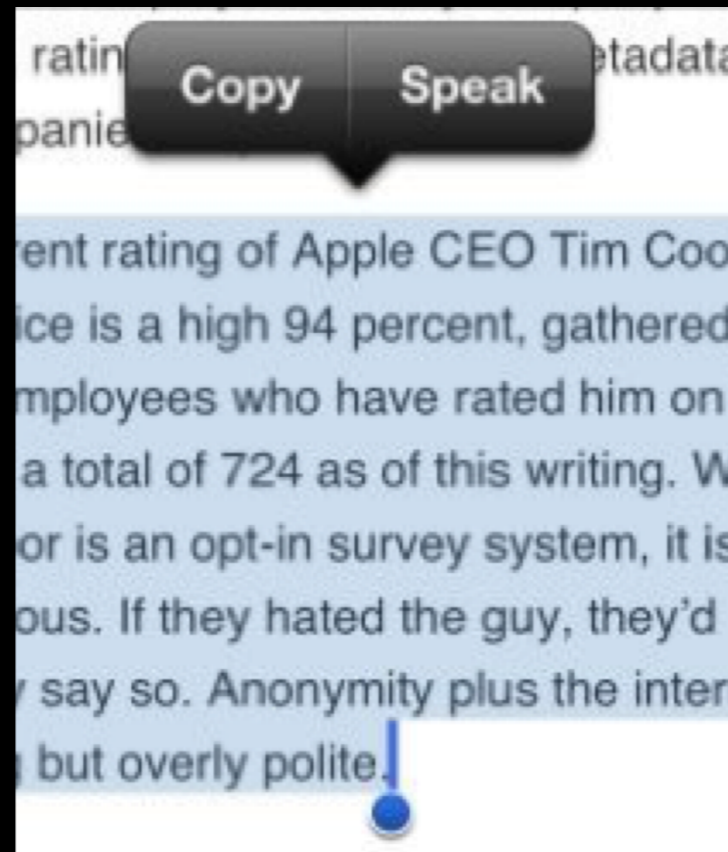




iOS Accessibility Features

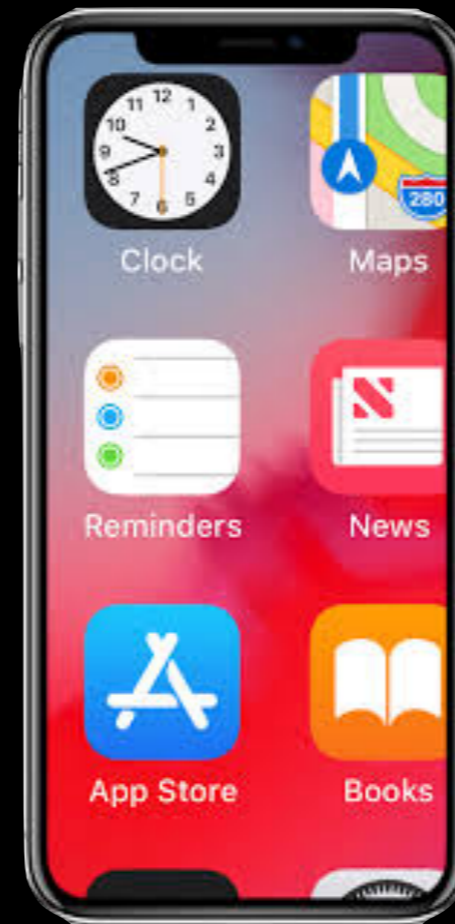
Speech

- Speak Selection
- Speak Screen



Vision

- Zoom
- Magnifier
- Larger Text



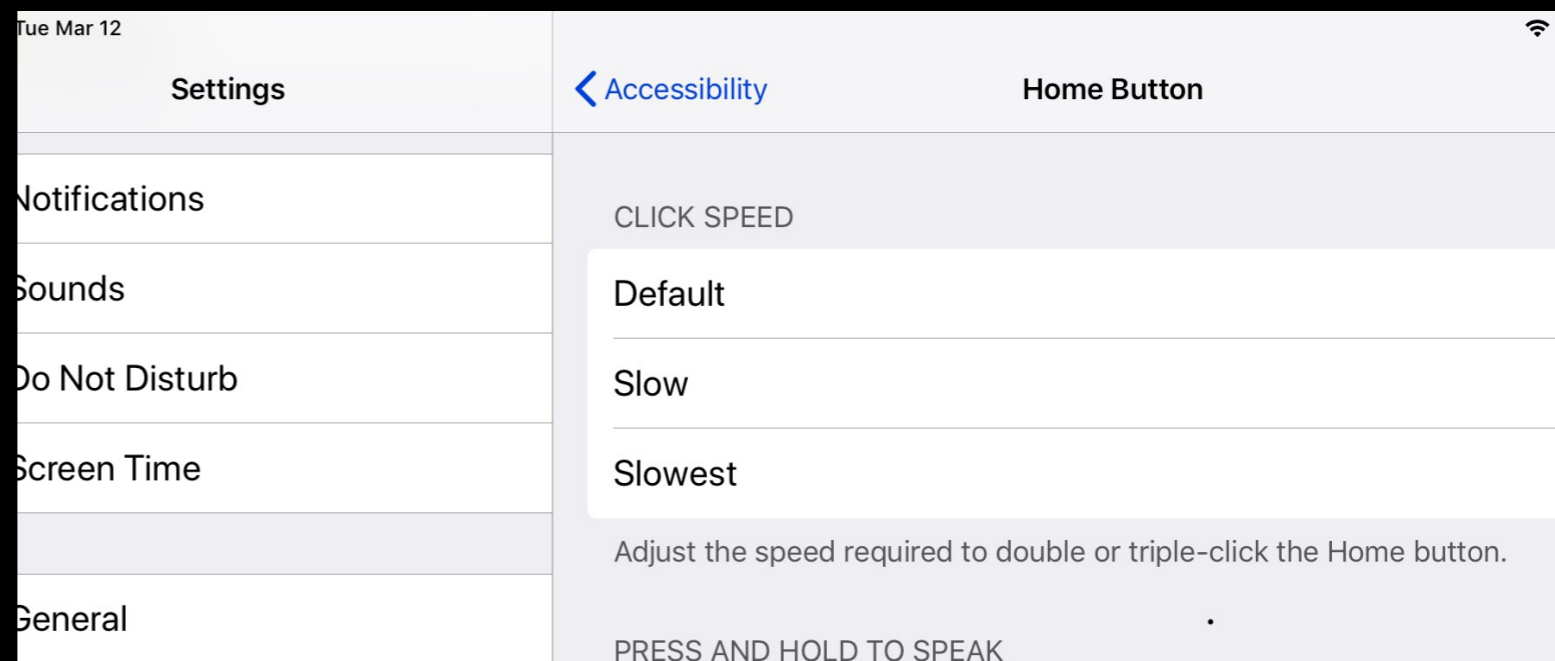
Touch

- Assistive Touch



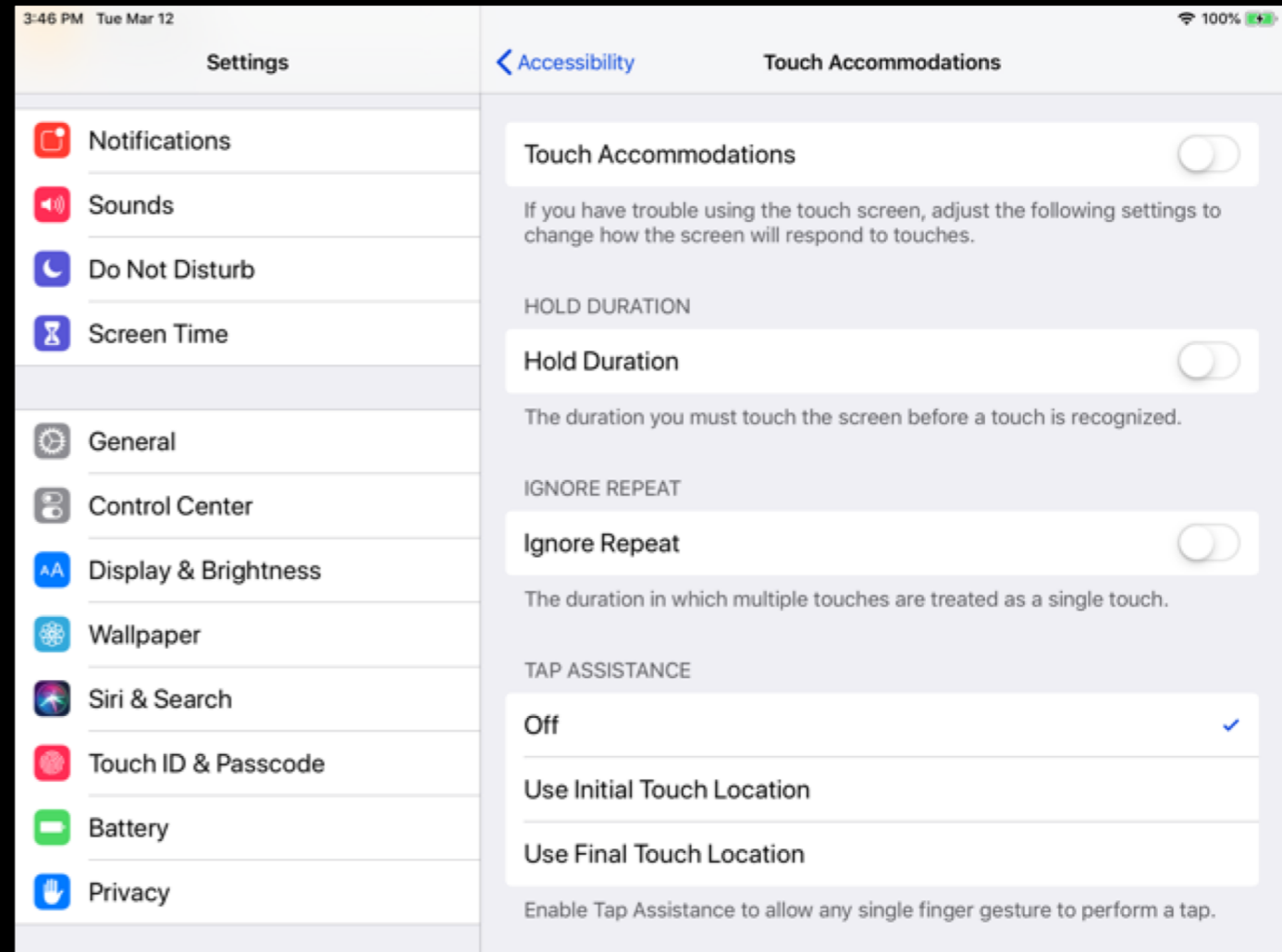
Touch

- Home Button



Touch

- Touch Accommodations



Speech Control

- Siri
- Dictation

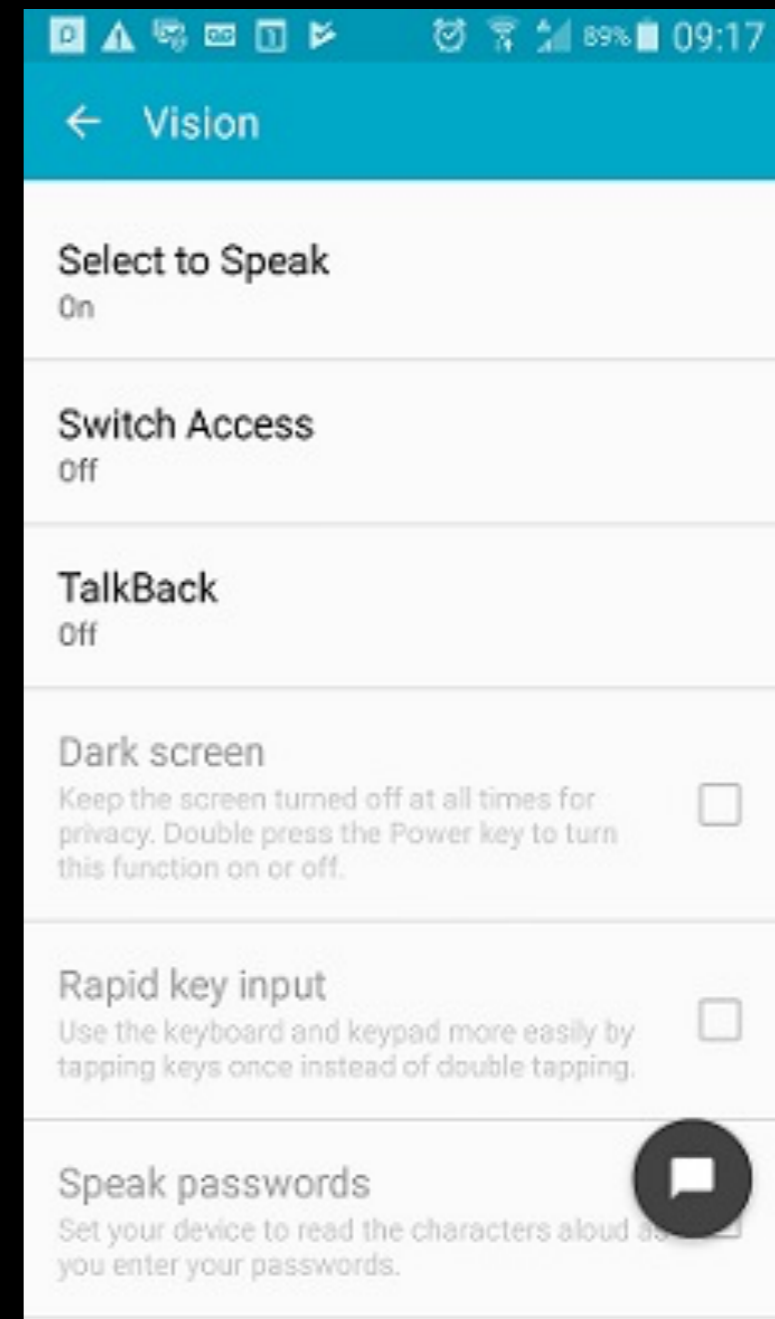




Android Accessibility Features

Speech

- Select to Speak
 - Part of Accessibility Suite



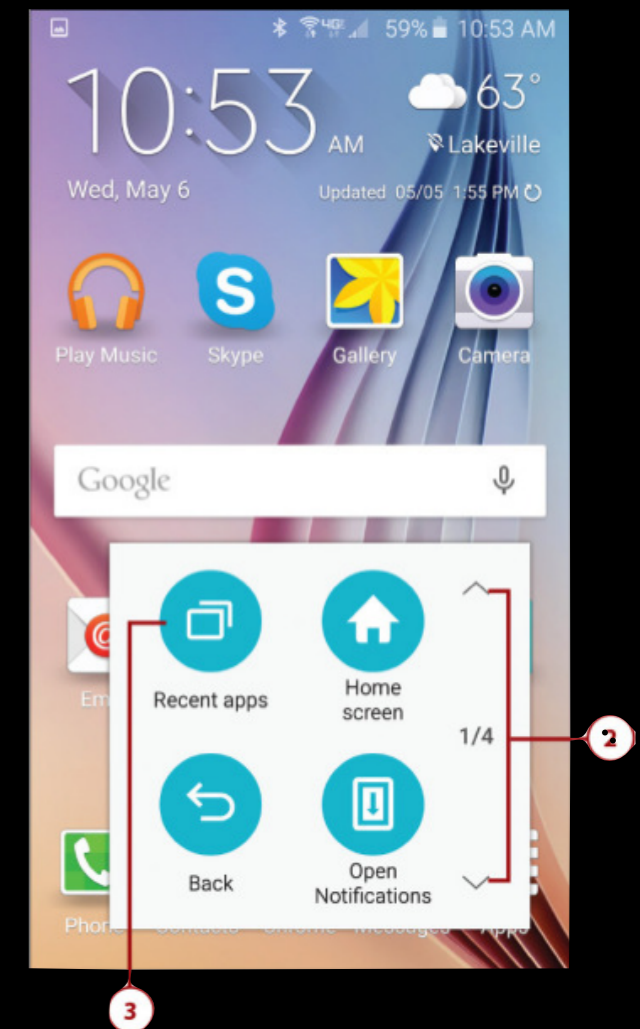
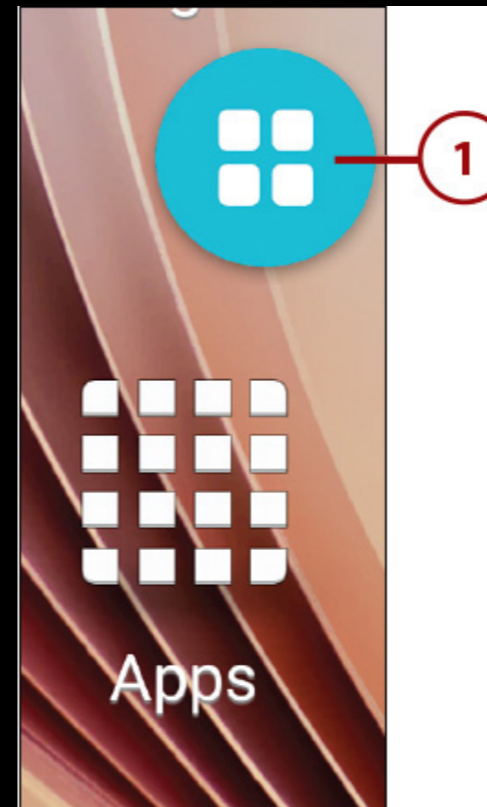
Vision

- Font Size
- Magnification
- High Contrast Keyboard



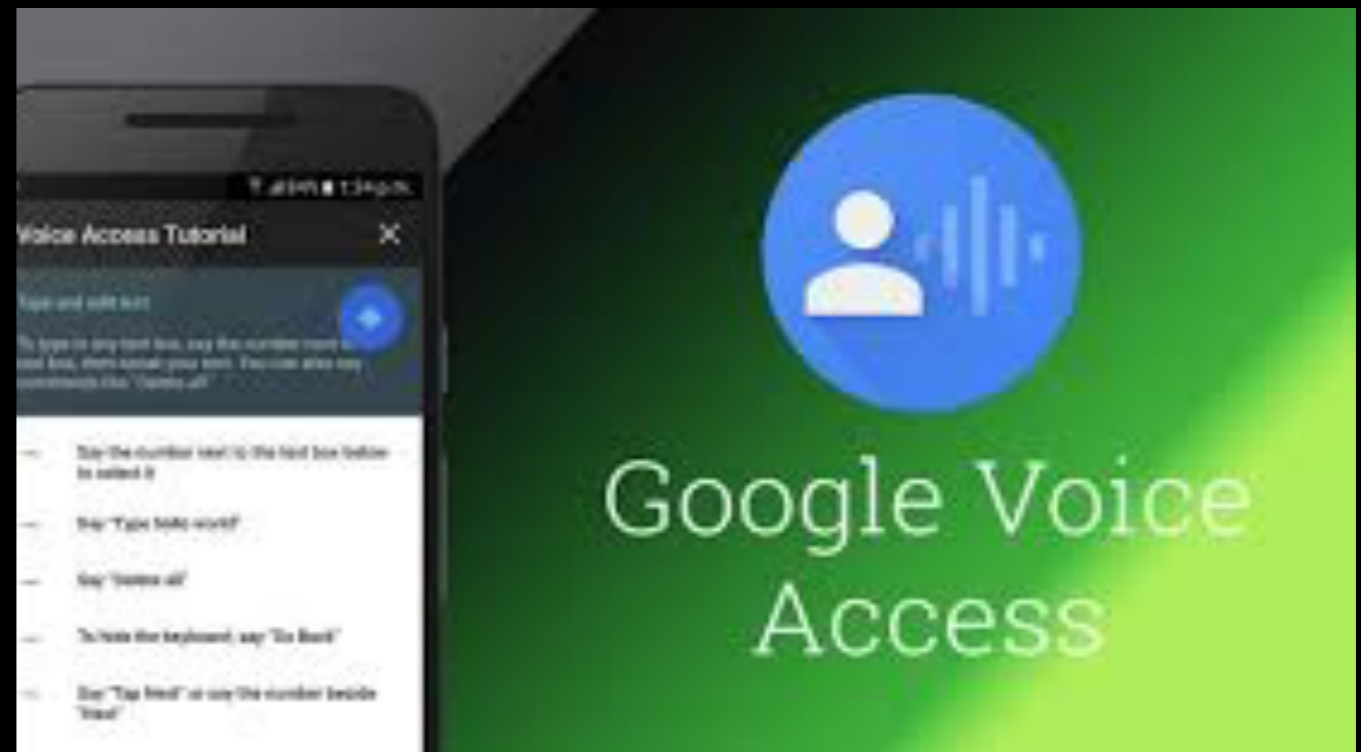
Touch

- Assistant Menu



Speech Control

- Voice Access





Performance Enhancers

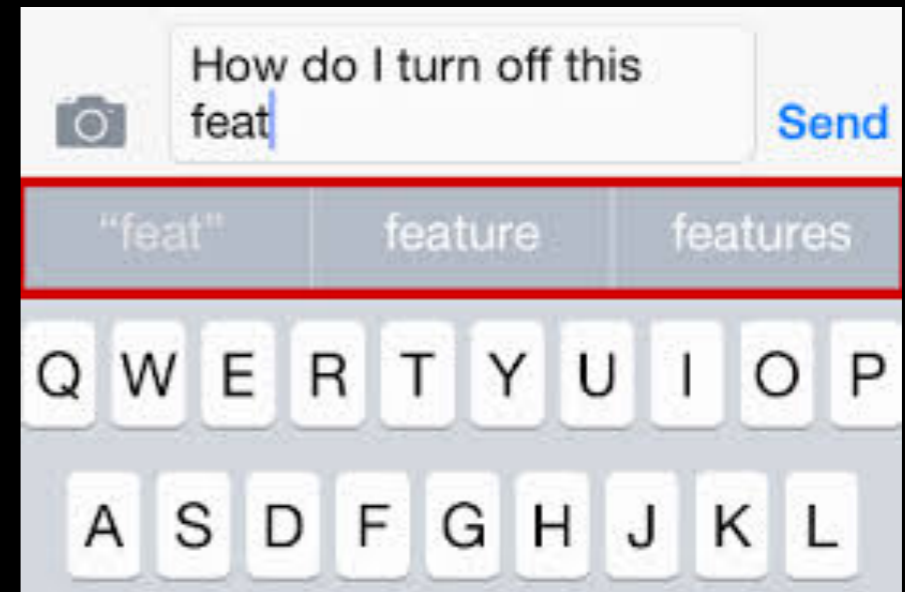
Physical Enhancers

- Pointer / Typing Splint
- Forearm Supports



Software Enhancers

- Word Prediction / Auto Correct
- Text Replacement





Environmental Control

Smart Speakers

- Amazon Echo
- Google Home



Smart Speakers

- Safety
- Phone calls
- Alarms
- To do lists
- Calendar Integration
- Control lights, thermostats
- Shop



Safety

- Works with Amazon Alexa and Google Home
- Use voice to send alerts
 - Phone, Text, Email
- *“Alexa Ask My Buddy to Alert Everyone”*

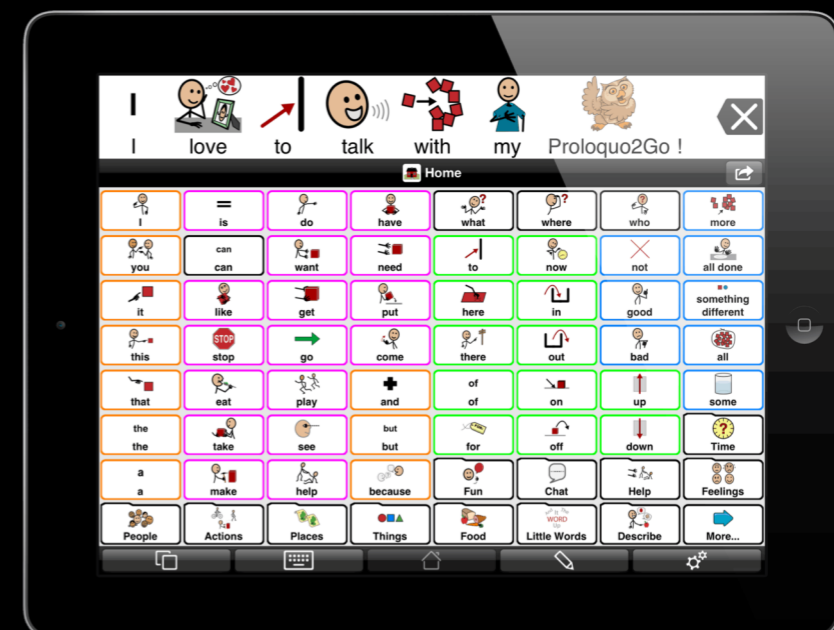
The logo for 'Ask My Buddy' is displayed in a blue, sans-serif font. Below the main text, the words 'Personal Alert' are followed by a circle with a plus sign inside, and then the word 'Network'.



Communication

Alternative Augmentative Communication

- Dedicated devices
- Integrated devices



Resources

- Missouri Assistive Technology
- Illinois Assistive Technology Program



Lets Try It

Dictate on iPhone

- Open **Settings** app from Home screen
- Select **General**
- Select **Keyboard**
- Select the **On/Off** switch next to **Enable Dictation**
- Open a text entry app and then tap the **Dictation key** on the keyboard and speak a message.

Dictate on Android

- Open a text entry app
- Tap the mic icon on the keyboard
- Speak a message

Thank You

- Bob Cunningham
- rcunningham@maryville.edu