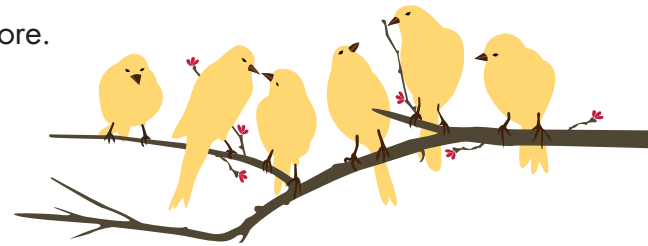


Parkinson's Family Support

Are you caring for someone with Parkinson's disease?

A Care Partner Support program is now forming on the North Shore. This **twice monthly** group will offer you the chance to:

- Join with others to share the challenges you face
- Learn about resources and strategies
- Be part of a supportive and caring community



Respite and lunch are available for persons with PD at no additional cost.

- When:** Tuesdays, 12:30 – 2:00 p.m.
October 2, 16, November 6, 20, December 4, 11
- Where:** Harriett and Ralph Kaplan Estates
240 Lynnfield Street, Peabody, MA 01960
- Cost:** There is a fee to participate. Financial assistance is available.
- Facilitator:** Stephanie Recchia, LICSW, Geriatric Medical Social Worker

For more information and to reserve a group spot and arrange for respite, please contact Nancy Mazonson at nmazonson@jfcsboston.org or 781-693-5069.

"The group has been a lifeline. I feel less alone." —BK
"Sharing with others brings balance to my life." —LG



This program is supported by the APDA MA.

www.apdama.org