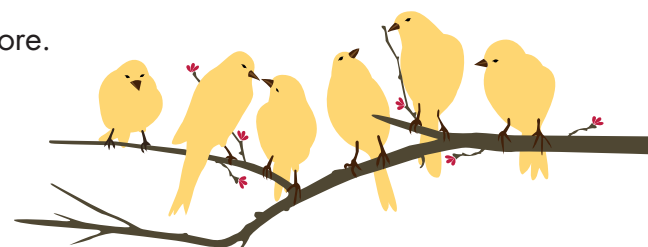


Are you caring for someone with Parkinson's disease?

A Care Partner Support program is now forming on the North Shore. This **twice monthly** group will offer you the chance to:

- Join with others to share the challenges you face
- Learn about resources and strategies
- Be part of a supportive and caring community



Activity and lunch are available for persons with PD at no additional cost.

- When:** Tuesdays, 12:30 – 2:00 p.m.
Sept. 10, 24, Oct. 8, 22, Nov. 5, 19, and Dec. 3, 17
- Where:** Harriett and Ralph Kaplan Estates
240 Lynnfield Street, Peabody, MA 01960
- Cost:** Suggested contribution \$80 for 8 sessions
- Facilitator:** Stephanie Recchia, LICSW, Geriatric Medical Social Worker

For more information and to reserve a group spot and arrange for respite, please contact Anne Muskopf at amuskopf@jfcsboston.org or 781-693-5069.

"The group has been a lifeline. I feel less alone." —BK
"Sharing with others brings balance to my life." —LG

CHELSEA JEWISH LIFECARE

HARRIETT AND RALPH
KAPLAN ESTATES
ASSISTED LIVING
AND MEMORY SUPPORT